

# Ellison

BEDROOM COLLECTION



2235AST Queen Adjustable Storage Bed, 2115AST Small 3-Drawer Nightstand and 2143AST 6-Drawer Chest.



2218AST Queen Panel Storage Bed and 2116AST 3-Drawer Nightstand.



3910AST Queen Alder Adjustable Headboard Platform Bed, 2116AST 3-Drawer Nightstand and 2140AST Upholstered Bench.

Whittier  
Wood®  
FURNITURE

Real Wood. Real Quality.

A perfect fusion of contemporary grace and urban elegance emanates from the stylish design of this collection. The subtle contrasting colors of the Astoria Sky finish are beautiful. The exquisitely crafted Ellison boasts English dovetail drawer construction and full extension metal ball bearing drawer slides for easy access to the spacious drawers. A precisely engineered 45-degree miter face frame seamlessly surrounds spacious inset drawers. Antique Pewter drawer pulls add an appealing accent. Made from certified sustainable American Alder hardwood.

Available Finish

AST

## FEATURES

- Astoria Sky finish.
- Made of solid, sustainable American Alder hardwood.
- Antique Pewter drawer pulls.
- Full extension metal ball bearing drawer slides.
- English dovetail drawer construction.
- Fluted wood dowel and slip miter joinery for strength and stability.
- Fitted back for structural strength.
- Dust bottoms on all case pieces.
- Tipping restraints included on chests and dressers.
- Chest and dressers include an anti-tip safety mechanism that reduces the risk of tip-over.
- Adjustable levelers on all case legs.

## PANEL BEDS



- Footboard: 15"H
- Slats: 6"H

- Full - #2206AST  
59-1/2"W x 79-1/2"L x 50"H
- Queen - #2210AST (shown)  
65-1/2"W x 85"L x 50"H
- King - #2213AST  
81-1/2"W x 85"L x 50"H
- Cal-King - #2215AST  
77-1/4"W x 89"L x 50"H

## PANEL STORAGE BEDS



- Footboard: 15"H
- Deck: 13"H
- Includes six spacious drawers.

- Full - #2195AST  
59-1/2"W x 79-1/2"L x 50"H
- Queen - #2218AST (shown)  
65-1/2"W x 84"L x 50"H
- King - #2222AST  
81-1/2"W x 84"L x 50"H
- Cal-King - #2225AST  
77-1/4"W x 87-1/2"L x 50"H

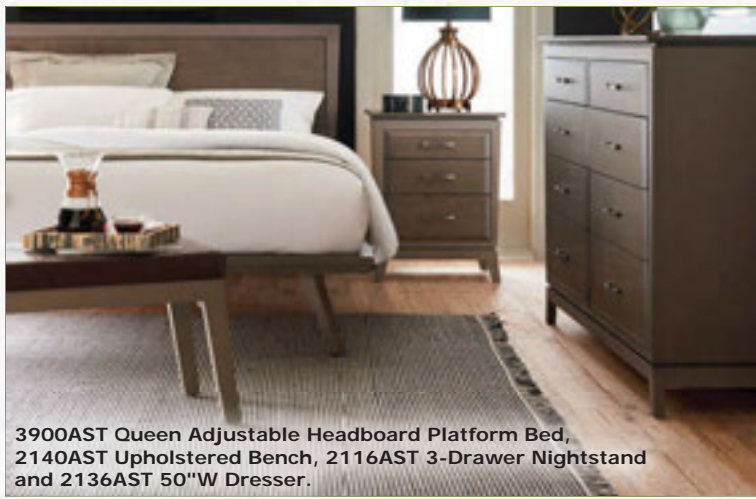
## ADJUSTABLE STORAGE BEDS



- Footboard: 13-3/4"H
- Deck: 13"H
- Headboard shown in position 2.
- Total headboard height adjustment: 5-1/4"
- Includes six spacious drawers.

- Queen - #2235AST (shown)  
63-3/4"W x 88-1/4"L x 46-1/8—51-3/8"H
- King - #2237AST  
79-3/4"W x 88-1/4"L x 46-1/8—51-3/8"H
- Cal-King - #2239AST  
75-1/2"W x 91-1/2"L x 46-1/8—51-3/8"H

Adjustable headboard accommodates various mattress heights.  
Please verify compatibility.



3900AST Queen Adjustable Headboard Platform Bed, 2140AST Upholstered Bench, 2116AST 3-Drawer Nightstand and 2136AST 50"W Dresser.

### PLATFORM BED FEATURES:

- Solid American Alder hardwoods.
- Platform surround is solid Alder hardwood.
- Four steel channels connect the two platform halves. Metal bolt and insert nut attachment ensure strength and rigidity.
- Leg assemblies are strengthened with a four-sided steel box bolted to the platform. High-density wool felt glide insert protects flooring and eliminates wear.
- Designed to hold up to 850 lbs.
- Headboards feature four height adjustments.



Adjustable Headboard detail.

### ADJUSTABLE HEADBOARD PLATFORM BEDS



- **Queen - #3900AST** (shown)  
65-3/4"W x 88-7/8"L x 42-1/4—46"H
- **King - #3904AST**  
81-3/4"W x 88-7/8"L x 42-1/4—46"H
- **Cal-King - #3907AST**  
77-1/2"W x 92-1/8"L x 42-1/4—46"H

- Platform: 13"H
- Headboard shown in position 2.
- Total headboard height adjustment: 3-3/4"

### ALDER ADJUSTABLE HEADBOARD PLATFORM BEDS



- **Queen - #3910AST** (shown)  
65-3/4"W x 88-7/8"L x 39-3/8—43-1/8"H
- **King - #3912AST**  
81-3/4"W x 88-7/8"L x 39-3/8—43-1/8"H
- **Cal-King - #3914AST**  
77-1/2"W x 92-1/8"L x 39-3/8—43-1/8"H

- Platform: 13"H
- Headboard shown in position 2.
- Total headboard height adjustment: 3-3/4"

Adjustable headboards accommodate various mattress heights.  
Please verify compatibility.

### PLATFORM BEDS



- **Queen - #3916AST** (shown)  
65-3/4"W x 85-5/8"L x 13-1/2"H
- **King - #3918AST**  
81-3/4"W x 85-5/8"L x 13-1/2"H
- **Cal-King - #3920AST**  
77-1/2"W x 89"L x 13-1/2"H

- Platform: 13"H

### CASE PIECES & MORE



- **1-Drawer Nightstand**  
#2114AST  
23-1/4"W x 17-1/2"D x 22"H



- **Small 3-Drawer Nightstand**  
#2115AST  
18-1/4"W x 15-1/2"D x 29"H



- **3-Drawer Nightstand**  
#2116AST  
23-1/4"W x 17-1/2"D x 29"H

- Features cord access hole.



- **4-Drawer Chest**  
#2142AST  
39-3/4"W x 18"D x 42-1/2"H



- **6-Drawer Chest**  
#2143AST  
39-3/4"W x 18"D x 54"H



- **50"W Dresser**  
#2136AST  
50"W x 18"D x 42"H



- **60"W Dresser**  
#2137AST  
60"W x 18"D x 42"H



- **70"W Low Dresser**  
#2138AST  
70"W x 18"D x 36"H



Jewelry tray detail.

- **70"W Dresser - #2139AST**  
70"W x 18"D x 42"H

- Features one drawer with two velvet lined jewelry trays.

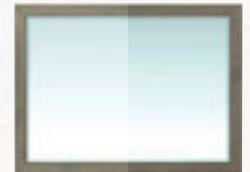


- **Upholstered Bench**  
#2140AST  
42-3/8"W x 16"D x 19"H



- **Beveled Mirror**  
#2170AST  
35-3/4"W x 1-1/4"D x 32-3/4"H

- Mounts horizontally on dressers: 2136, 2137, 2138 & 2139.
- Mounts horizontally or vertically on the wall.



- **Rectangular Mirror**  
#2171AST  
46"W x 1-1/4"D x 35-3/4"H

- Mounts horizontally on dressers: 2137, 2138 & 2139.
- Mounts vertically on dresser: 2136.
- Mounts horizontally or vertically on the wall.

We strive to provide an accurate representation of our finishes. Variations due to lighting and printing limitations may occur. To determine the actual color of a finish, please visit your local Whittier Wood Furniture retailer. Product availability and specifications shown are based on the latest product information available at the time of printing and are subject to change without notice.